

## Trends require business savvy

Most people associate health care with the familiar players—doctors and nurses. However, health care organizations require expertise from individuals in IT, human resources, office management and finance. Since the industry experiences disruptions, individuals with business savvy are able to make projections that keep operations running smoothly and effectively.

A major shift in the business side of health included the digitization of patient care records. This required office managers and IT professionals to create and implement new systems to relocate physical files into the cloud.

The trend toward telehealth requires professionals who understand both pieces of the puzzle—the actual clinical language, diagnostics, and treatment of health issues, as well as those who can create the technology structure needed to make apps and other related services available.

Consider using business, sales and technical skills to enter the workforce in this booming industry. Opportunities exist in such occupations as clinical sales liaisons, health care trainers and supply and equipment technicians.

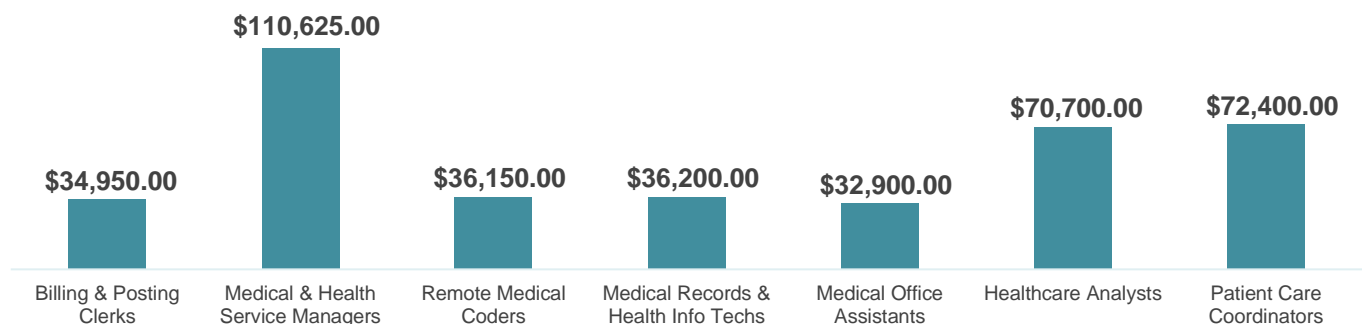
The occupations shown below represent a cross-section of entry-, mid- and executive-level positions.

<b>FAST FACTS</b>	NUMBER OF NEFL JOBS IN HEALTHCARE IS <b>5%</b> ABOVE NATIONAL AVERAGE
	Some Health occupations work alongside <b>AI Technology.</b>
INDUSTRY IS GROWING <b>2.9%</b> PER YEAR COMPARED TO 2.2% NATIONAL AVERAGE	

## TOP INDUSTRY EMPLOYERS (2021)

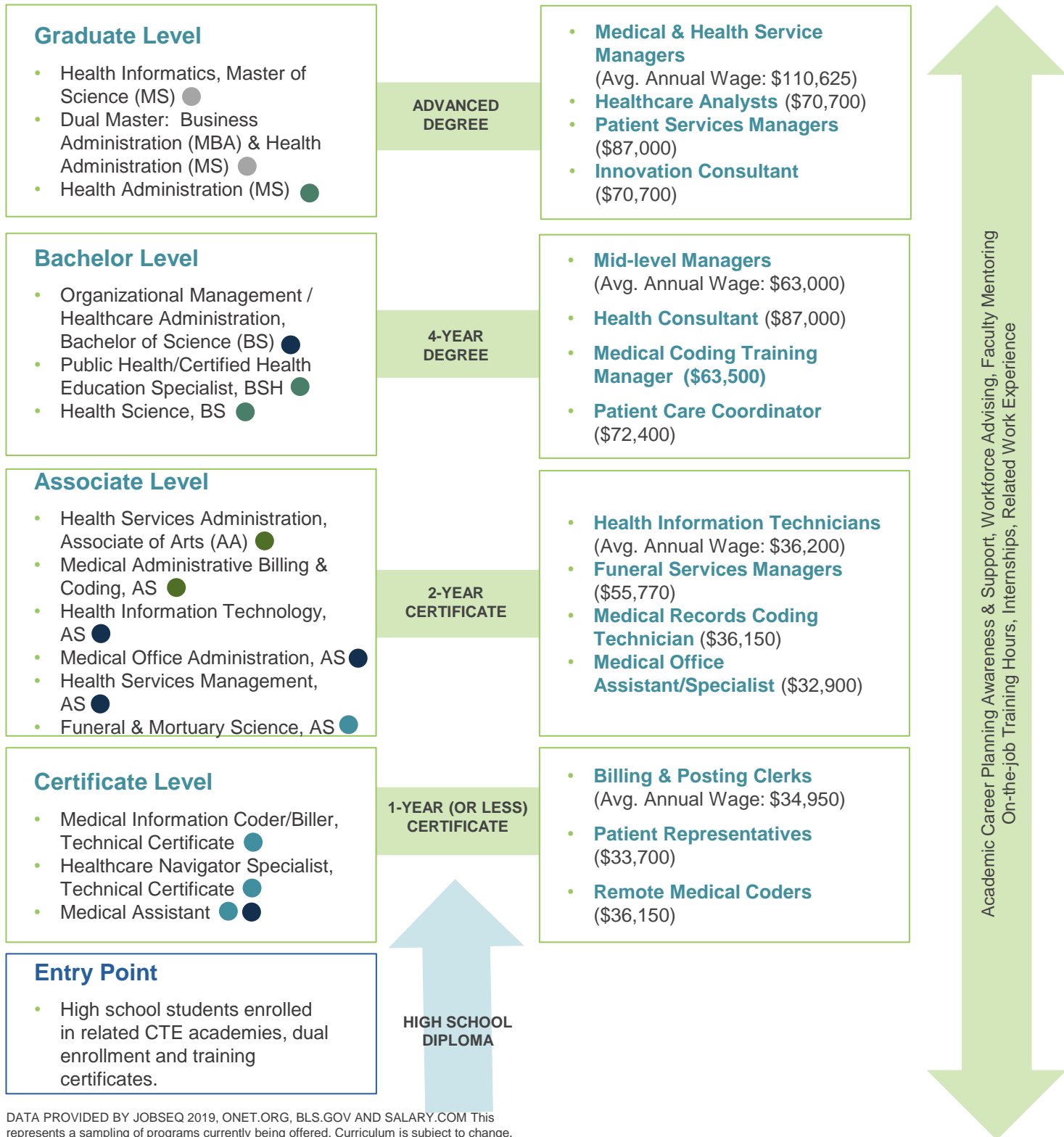
Company	Number of Employees
Baptist Health	12,400
Ascension	5,300
UF Health Jacksonville	3,600
Brooks Rehabilitation	2,000
Memorial Health	1,800

## AVERAGE WAGES



# Business Side of Health & Biomedical Pathway

<b>TALENT PIPELINE</b>	<b>23</b> CTE academies focusing on Health care related curriculum	<b>6</b> Regional colleges & degree or certificate programs with <b>Health care</b> (or related) concentrations	<ul style="list-style-type: none"> <li>● Edward Waters College</li> <li>● Florida State College at Jacksonville</li> <li>● Jacksonville University</li> <li>● Keiser University</li> <li>● St. Johns River State College</li> <li>● University of North Florida</li> </ul>
------------------------	--------------------------------------------------------------------	-----------------------------------------------------------------------------------------------------------------	----------------------------------------------------------------------------------------------------------------------------------------------------------------------------------------------------------------------------------------------------------------------------



DATA PROVIDED BY JOBSEQ 2019, ONET.ORG, BLS.GOV AND SALARY.COM This represents a sampling of programs currently being offered. Curriculum is subject to change.

# Select Regional Employers Health & Biomedical



Ascension St. Vincent's  
HealthCare+\*  
Availity +\*  
Baptist Health +\*  
Brooks Rehabilitation +\*  
Florida Blue +\*

Forcura +\*  
Formativ Health +  
Mayo Clinic +\*  
Memorial Hospital +\*  
Nemours Children's Clinic +

Orange Park Medical  
Center +  
UF Health+

+ JAX Chamber Member  
\* JAXUSA Partnership Investor

Earn Up is powered by JAXUSA Partnership, the private, nonprofit division of JAX Chamber that is Jacksonville's regional economic development initiative overseeing the efforts of the seven counties of Northeast Florida. Earn Up also works closely with CareerSource Northeast Florida to ensure that employers have the best assistance for any pertinent workforce needs. For more information, please contact:

## JAXUSA TALENT DEVELOPMENT

**Dr. Anna Lebesch**, Vice President  
(904) 366-6651 or [alebesch@jaxusa.org](mailto:alebesch@jaxusa.org)

**Julie Hindall**, Director  
(904) 366-6615 or [jhindall@jaxusa.org](mailto:jhindall@jaxusa.org)

## CAREERSOURCE NORTHEAST FLORIDA

**Carol Cullen**, Industry Sector Manager  
Health care  
(904) 798-0060 ext. 2214 or  
[ccullen@careersourcenefl.com](mailto:ccullen@careersourcenefl.com)

