

Encompassing a wealth of roles

The role of doctor and nurse is familiar to the general public. However, the clinical side of health care also encompasses office, diagnostic, therapeutic and technical aspects of the health care system, all of which are needed to deliver high-quality patient care services. These professionals may work in offices, labs or hospitals. They have job security, earn advanced wages and are part of one of the fastest growing industries in Northeast Florida. According to the Florida Chamber, every role in health care is projected to grow over the next 5 years.

Without the assistance and analysis done by the professionals focusing on the patient care side of health care, the work of doctors and nurses would not flow nearly as effectively or efficiently. Ultimately, these professionals facilitate the information needed to offer outstanding care. This aspect of health care will continue to evolve to meet the needs of our aging population.

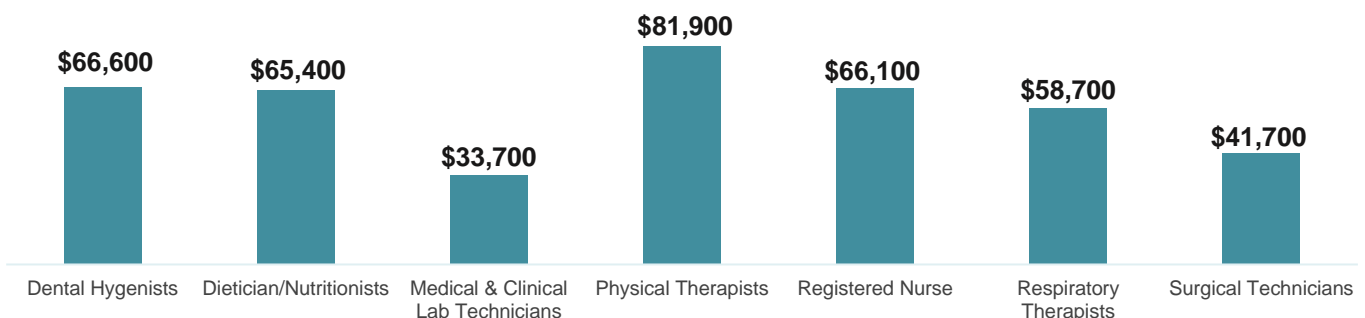
The occupations shown below represent a cross-section of entry-, mid- and executive-level positions within the industry.

FAST FACTS	53,012 EMPLOYED IN THE SECTOR IN THE REGION
1 IN 6 JOBS IN THE REGION ARE IN HEALTH CARE	\$66,834 AVERAGE WAGE PER WORKER

TOP INDUSTRY EMPLOYERS (2021)

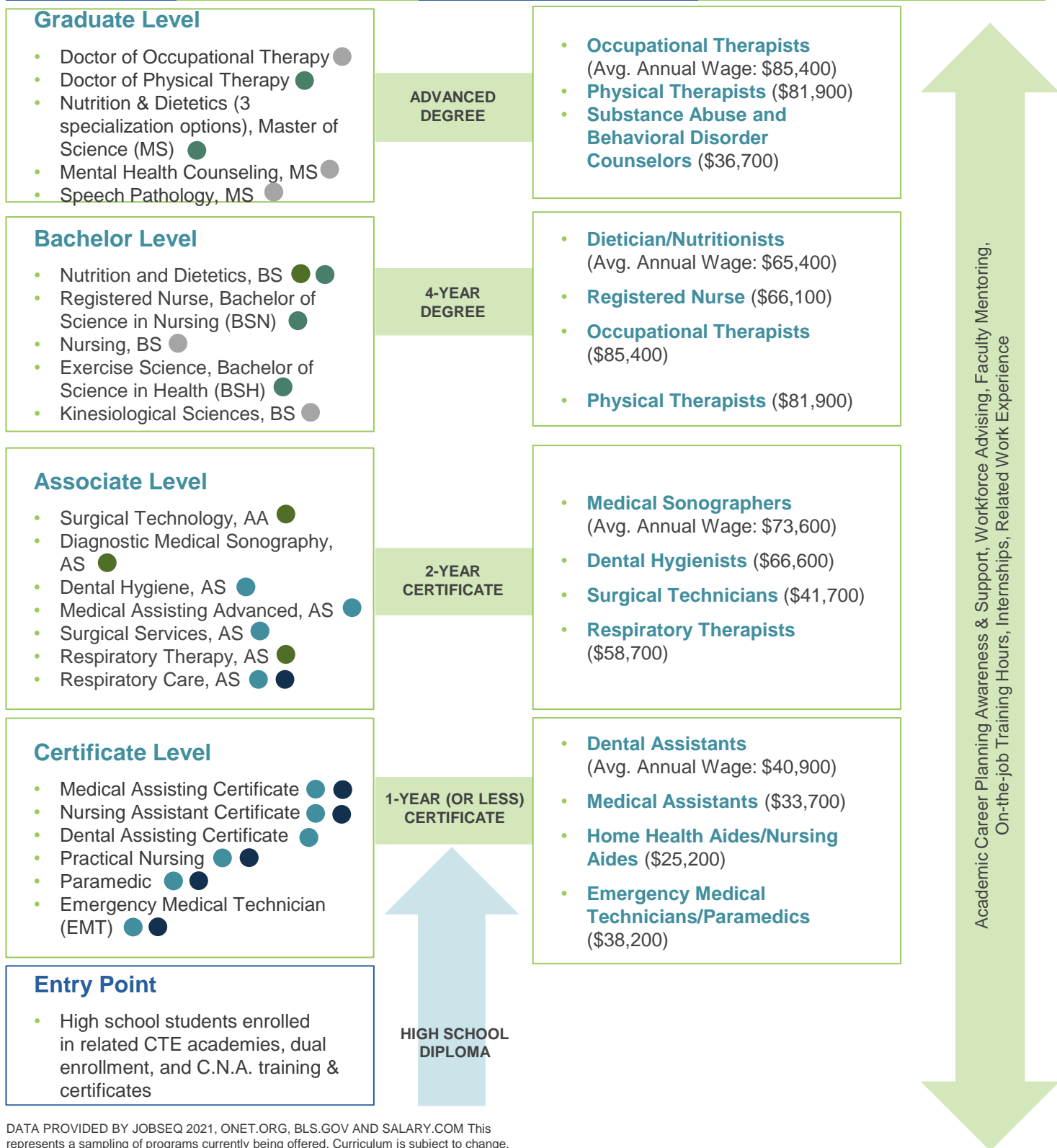
Company	Number of Employees
Baptist Health	12,400
Ascension St. Vincent's	5,300
UF Health Jacksonville	3,600
Brooks Rehabilitation	2,000
Memorial Health	1,800

AVERAGE WAGES



Patient Care Side of Health care Pathway

TALENT PIPELINE	23 CTE academies focusing on Health care related curriculum	6 Regional colleges & degree or certificate programs with Health care (or related) concentrations	<ul style="list-style-type: none"> ● Edward Waters College ● Florida State College at Jacksonville ● Jacksonville University ● Keiser University ● St. Johns River State College ● University of North Florida
------------------------	--	---	--



DATA PROVIDED BY JOBSEQ 2021, ONET.ORG, BLS.GOV AND SALARY.COM This represents a sampling of programs currently being offered. Curriculum is subject to change.

Select Regional Employers Health & Biomedical



Ascension St. Vincent's
HealthCare+*
Availity +*
Baptist Health +*
Brooks Rehabilitation +*
Florida Blue +*

Forcura +*
Formativ Health +
Mayo Clinic +*
Memorial Hospital +*
Nemours Children's Clinic +

Orange Park Medical
Center +
UF Health+

+ JAX Chamber Member
* JAXUSA Partnership Investor

Earn Up is powered by JAXUSA Partnership, the private, nonprofit division of JAX Chamber that is Jacksonville's regional economic development initiative overseeing the efforts of the seven counties of Northeast Florida. Earn Up also works closely with CareerSource Northeast Florida to ensure that employers have the best assistance for any pertinent workforce needs. For more information, please contact:

JAXUSA TALENT DEVELOPMENT

Dr. Anna Lebesch, Vice President
(904) 366-6651 or alebesch@jaxusa.org

Julie Hindall, Director
(904) 366-6615 or jhindall@jaxusa.org

CAREERSOURCE NORTHEAST FLORIDA

Carol Cullen
Industry Sector Manager, Health care
(904) 798-0060 ext. 2214 or
ccullen@careersourcenefl.com

