

## Encompassing a wealth of clinical roles

The role of doctor and nurse is familiar to the general public. However, this clinical side of health care also encompasses office, diagnostic, therapeutic, and technical aspects of the health care system, all of which are needed to deliver high-quality patient services. These professionals may work in offices or labs in addition to hospitals. They have job security and good wages. They're part of one of the fastest growing industries in the Northeast Florida region.

Without the assistance and analysis done by the professionals focusing on the patient side of health care, the work of doctors and nurses would not flow nearly as effectively or efficiently. Ultimately, these professionals facilitate the care and information needed to offer outstanding care. This aspect of healthcare will continue to evolve to meet the needs of our aging population.

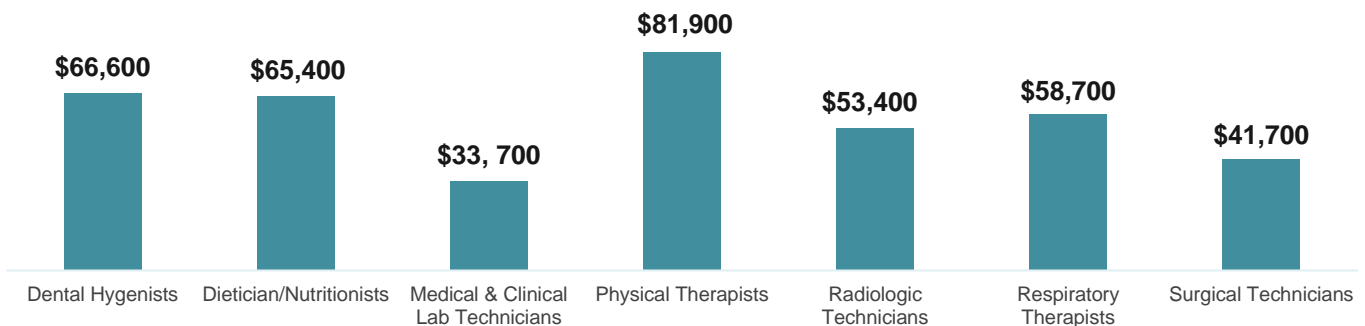
The occupations shown below represent a cross-section of entry-, mid- and executive-level positions within the industry.

<b>FAST FACTS</b>	<b>53,012</b> EMPLOYED IN THE SECTOR IN THE REGION
<b>1 IN 6</b> JOBS IN THE REGION ARE IN HEALTH CARE	<b>\$66,834</b> AVERAGE WAGE PER WORKER*

## TOP INDUSTRY EMPLOYERS (2021)

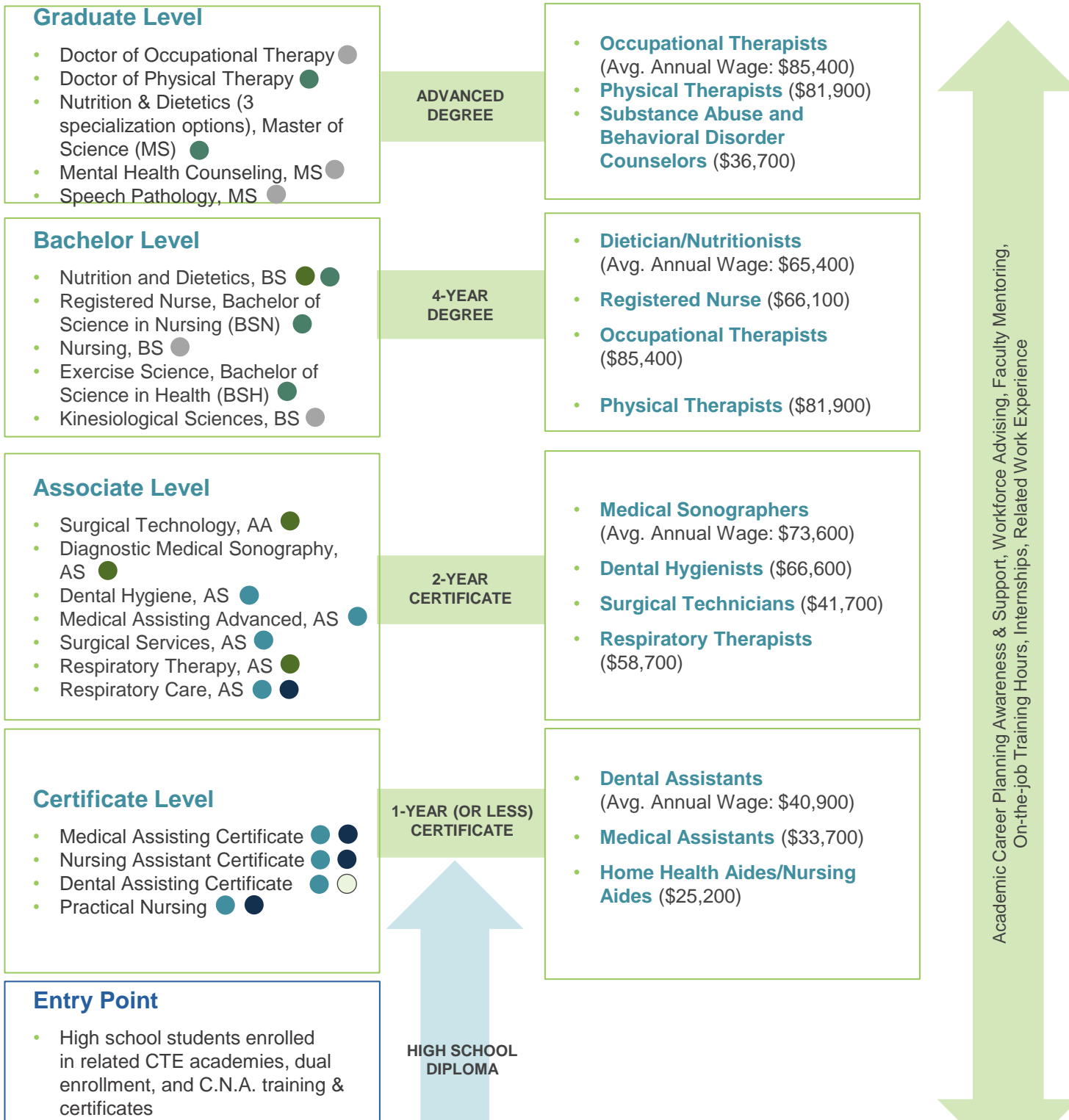
Company	Number of Employees
Baptist Health	11,000
Ascension St. Vincent's	5,300
UF Health Jacksonville	3,600
Brooks Rehabilitation	2,000
Memorial Health	1,800

## AVERAGE WAGES



# Patient Care Side of Healthcare Pathway

<b>TALENT PIPELINE</b>	<b>23</b> CTE academies focusing on Healthcare related curriculum	<b>7</b> Regional colleges & degree or certificate programs with <b>Healthcare</b> (or related) concentrations	<ul style="list-style-type: none"> <li>● Edward Waters College</li> <li>● Florida State College at Jacksonville</li> <li>● Jacksonville University</li> <li>● Keiser University</li> <li>● St. Johns River State College</li> <li>● University of North Florida</li> <li>● First Coast Technical College</li> </ul>
------------------------	---	--	---



DATA PROVIDED BY JOBSEQ 2021, ONET.ORG, BLS.GOV AND SALARY.COM This represents a sampling of programs currently being offered. Curriculum is subject to change.

# Select Regional Employers Health & Biomedical



**Ascension St. Vincent's HealthCare\*\***  
5,300 employees



**Availity\*\***  
350 employees



**Baptist Health\*\***  
11,000 employees



**Brooks Rehabilitation\*\***  
2,000 employees



**Florida Blue\*\***  
7,000 employees



**Forcura+**  
70 employees



**Formativ Health+**  
350 employees



**Mayo Clinic\*\***  
6,000 employees



**Memorial Hospital\*\***  
1,800 employees



**Nemours Children's Clinic+**  
420 employees



**Orange Park Medical Center+**  
1,640 employees



**UF Health+**  
3,600 employees

+ JAX Chamber member  
\* JAXUSA Partnership Investor

Earn Up is powered by JAXUSA Partnership, the private, nonprofit division of JAX Chamber that is Jacksonville's regional economic development initiative overseeing the efforts of the seven counties of Northeast Florida. Earn Up also works closely with CareerSource Northeast Florida to ensure that employers have the best assistance for any pertinent workforce needs. For more information, please contact:

## JAXUSA TALENT DEVELOPMENT

**Dr. Anna Lebesch**, Vice President  
(904) 366-6651 or [alebesch@jaxusa.org](mailto:alebesch@jaxusa.org)

**Julie Hindall**, Director  
(904) 366-6615 or [jhindall@jaxusa.org](mailto:jhindall@jaxusa.org)

## CAREERSOURCE NORTHEAST FLORIDA

**Carol Cullen**, Industry Sector Manager, Healthcare  
(904) 798-0060 ext. 2214 or  
[ccullen@careersourcenefl.com](mailto:ccullen@careersourcenefl.com)

**EARN UP**  
Higher Earning through Higher Learning

