

### Encompassing a wealth of roles

The role of doctor and nurse is familiar to the general public. However, the clinical side of life sciences also encompasses office, diagnostic, therapeutic and technical aspects of the health care system, all of which are needed to deliver high-quality patient care services. These professionals may work in offices, labs or hospitals. They have job security, earn advanced wages and are part of one of the fastest growing industries in Northeast Florida. According to the Florida Chamber, every role in health care is projected to grow over the next several years.

Without the assistance and analysis done by the professionals focusing on the patient care side of health care, the work of doctors and nurses would not flow nearly as effectively or efficiently. Ultimately, these professionals facilitate the information needed to offer outstanding care. This aspect of life sciences will continue to evolve to meet the needs of our aging population.

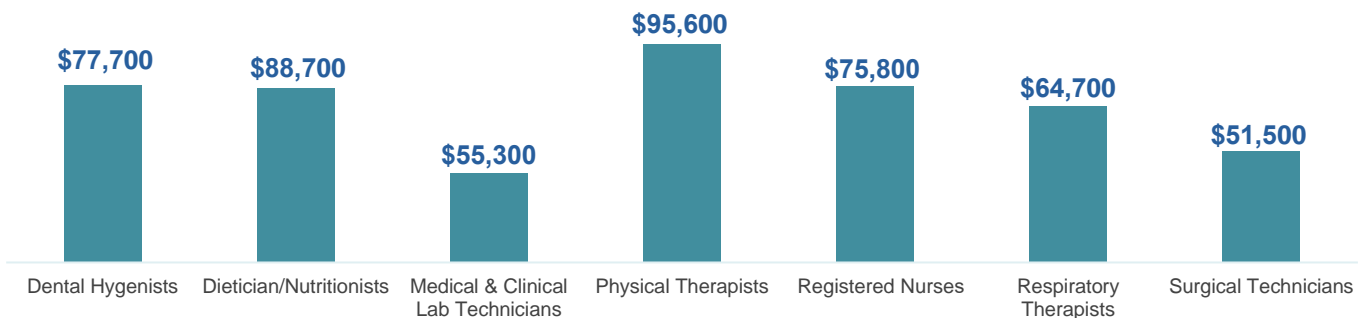
The occupations shown below represent a cross-section of entry-, mid- and executive-level positions within the industry.

<b>FAST FACTS</b>	<b>99,633</b> EMPLOYED IN THE SECTOR IN THE REGION
<b>1 IN 8</b> JOBS IN THE REGION ARE IN LIFE SCIENCES.	<b>\$73,887</b> AVERAGE WAGE PER WORKER

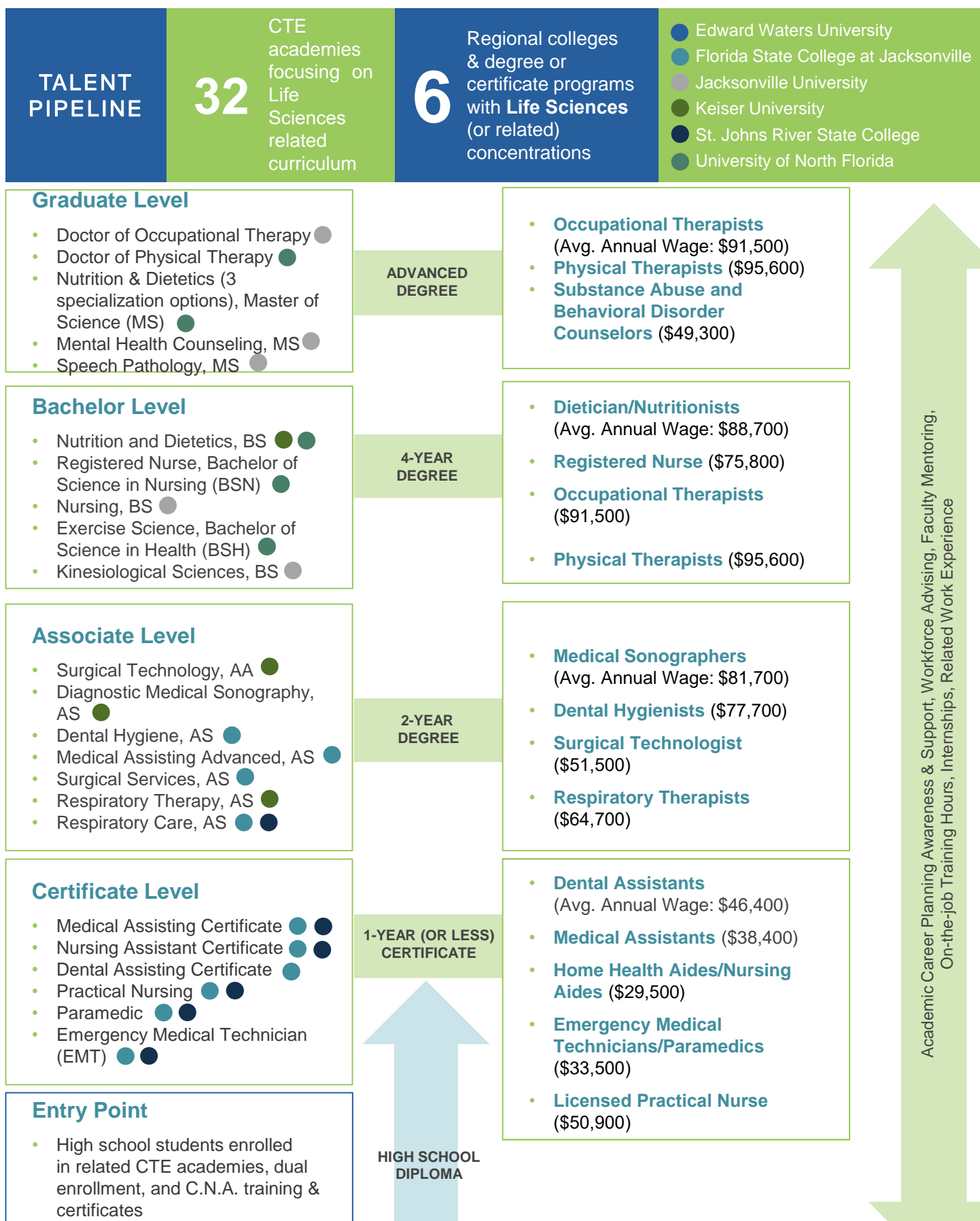
### TOP INDUSTRY EMPLOYERS (2023)

Company	Number of Employees
Baptist Health	12,000
Mayo Clinic	8,950
UF Health Jacksonville	6,600
Ascension St. Vincent's	5,050
Brooks Rehabilitation	2,170

### AVERAGE WAGES



# Patient Care Side of Life Sciences Pathway



DATA PROVIDED BY JOBSEQ 2023, ONET.ORG, BLS.GOV AND SALARY.COM This represents a sampling of programs currently being offered. Curriculum is subject to change.

# Select Regional Employers Life Sciences



Ascension St. Vincent's  
HealthCare+\*  
Availity +\*  
Baptist Health +\*  
Brooks Rehabilitation +\*  
Florida Blue +\*

Forcura +\*  
Formativ Health +  
Mayo Clinic +\*  
Nemours Children's Clinic +

HCA Healthcare+  
UF Health+

*\*JAXUSA Partnership Investor/ +JAX Chamber Investor*

## JAXUSA TALENT DEVELOPMENT

**Dr. Anna Lebesch**, Senior Vice President  
(904) 366-6651 or alebesch@jaxusa.org

**Julie Hindall**, Senior Director  
(904) 366-6637 or jhindall@jaxusa.org

Earn Up is powered by JAXUSA Partnership, the private, nonprofit division of JAX Chamber that is Jacksonville's regional economic development initiative overseeing the efforts of the seven counties of Northeast Florida. Earn Up also works closely with CareerSource Northeast Florida to ensure that employers have the best assistance for any pertinent workforce needs.

